



Guangzhou Tendars Tent Co., Limited
marquees-tent.com



Heavy Duty Marriage Event Party Wedding Tents Storage Warehouse Tents

Our Product Introduction

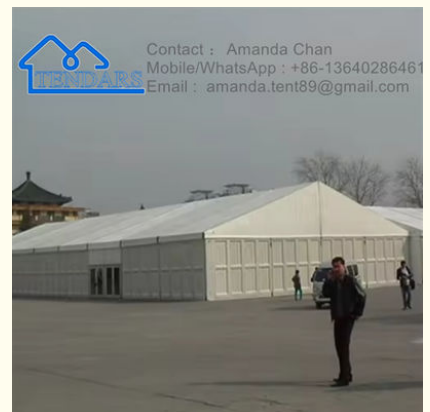
Basic Information

- Place of Origin: Guangdong
- Brand Name: Tendars
- Certification: ISO9001, SGS, Coc, CE
- Model Number: Big tent
- Minimum Order Quantity: 25 square meters
- Price: Reconsideration
- Packaging Details: 1, The aluminium frame structure packed into the bubble film 2, the pvc fabric roof cover and sidewalls are packed into the PVC fabric carry bag; 3, Hardware packed into the box.
- Delivery Time: 18days or To be negotiated
- Payment Terms: L/C, T/T, Western Union, MoneyGram
- Supply Ability: 50000 Square Meters per Month

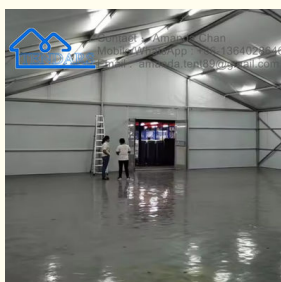


Product Specification

- Product Name: Heavy Duty Storage Warehouse Tents
- Area: Customized
- Fabric: PVC
- Outside Tent Waterproof Index: 1500-2000 Mm
- Bottom Waterproof Index: 1500-2000 Mm
- Building Type: Construction Based On Need
- Tent Style: Trigone/V-type Ground Nail
- Season: Four-season Tent
- Highlight: **Marriage Event Party Storage Warehouse Tents, Wedding Storage Warehouse Tents, Factory Price Storage Warehouse Tents**



More Images



for more products please visit us on marquees-tent.com

Product Description

Factory Price Heavy Duty Marriage Event Party Wedding Tents Storage Warehouse Tents For Sale

Description :

Tent Frame
Material:Aluminium 6061 T-6
Surface treatment:Surface anodized
Lifespan:15-20years

Tent Parameters	
Frame	Material: Aluminium 6061T-6
parameters	Features: Stainless Lightweight
Tarpaulin (PVCcloth) parameters	1. Color: Customized
	2. Double-layer PVC synthetic fiber cloth (standard GB/T3830-94)
	3. Thickness: 0.58 limit deviation $\pm 0.02\text{mm}$
	4. Gram weight: 850g/m ² (top fabric: opaque) 650g/m ² (top fabric: semi-opaque)
	5. Tensile strength: Warp 3000N/5cm, Weft 2600N/5cm
	6. Peel strength: Warp 90N/5cm, Weft 90N/5cm
	7. Elongation: Warp 15%, Weft 20%
	8. Temperature resistance (°C): -30~70
	9. Wind resistance: 80-100km/h
	10.100% waterproof, fireproof (DIN4012 B1, M2), UV resistant.
connector	Steel parts, hot-dip galvanized

Here are some traits commonly associated with A-frame heavy-duty storage warehouse tents:

Sturdy Construction: A-frame heavy-duty storage warehouse tents are built with robust materials such as galvanized steel or aluminum frames and heavy-duty PVC or polyester fabric covers. This sturdy construction ensures durability and longevity, even in demanding industrial environments.

High Load Capacity: These tents are designed to withstand heavy loads, making them suitable for storing large quantities of equipment, inventory, or materials. The strong frame structure and reinforced fabric cover contribute to their high load-bearing capacity.

Weather Resistance: A-frame heavy-duty storage warehouse tents are engineered to withstand various weather conditions, including rain, wind, snow, and sun exposure. The weather-resistant fabric cover and sturdy frame provide reliable protection for stored items against the elements.

Spacious Interior: Despite their heavy-duty construction, A-frame storage warehouse tents offer ample interior space for storage purposes. The absence of interior support columns or poles maximizes usable storage space, allowing for efficient organization and access to stored items.

Quick Assembly: These tents are designed for quick and easy assembly, with pre-fabricated components that can be assembled on-site using basic tools and minimal labor. This allows for rapid deployment of storage facilities, minimizing downtime and maximizing productivity.

Customization Options: A-frame heavy-duty storage warehouse tents often offer customization options to suit specific storage needs. This may include adding doors, windows, ventilation systems, lighting, insulation, or partition walls to optimize the space and functionality of the structure.

Tent fixation

1. The hard cement floor is fixed with expansion screws
2. Grass, mud and soft ground are fixed by steel brazing
3. If the ground is not good for destructive fixation, our company provides the counterweight plate for the feet and the load-bearing plate is charged. Each foot needs at least 500KG weight, and the counterweight (such as yellow sand, sandbags) is provided by the customer
4. Before the implementation of the project, it can also be fixed with embedded parts. Our company provides free dimension drawings.

FAQ :

1.How big a tent do i need ?

Tent size depends on the number of people/area you want to cover.Normally,we calculate1-1.5sqm per person.

2.Our MOQ?

Different products ,different MOQ,pls call or email to learn

3.Can you make design for customer?

Yes,we have our own designer,we can make any customer design,different size and different colors.

4.Can i put my logo onto the products?

Yes,you can choose the silk imprint or digital imprint.

5.Any accessories included?

Our quotation includes repair kits,ground peg,PVC storage bag.

6.Product time.

For 1 pc sample,the production time is about 10 days after payment receipt.

For 20' container of order.the production time is about 30 days .

7.What payment term:

T/T 30% deposit,70% before shipment arranged or after goods inspected.

L/C irrevocable and at sight.

Western union or Paypal for small order.

8.Shipping way.

We have our own forwarder,you could choose by sea,air or express.Any shipping way you like is ok for us.



Guangzhou Tendars Tent Co., Limited



0086 13640286461



amanda@marquees-tent.com



marquees-tent.com

No.319, 2nd building , 8th zone , Aoyuan city plaza , Zhongcun Street, Guangzhou, Guangdong, China