



Guangzhou Tendars Tent Co., Limited
marquees-tent.com



Waterproof Aluminum A Shape Marquee Warehouse Storage Tent Large Outdoor Tent

Our Product Introduction

Basic Information

- Place of Origin: Guangdong
- Brand Name: Tendars
- Certification: ISO9001, SGS, Coc, CE
- Model Number: Big tent
- Minimum Order Quantity: 25 square meters
- Price: Reconsideration
- Packaging Details: 1, The aluminium frame structure packed into the bubble film 2, the pvc fabric roof cover and sidewalls are packed into the PVC fabric carry bag; 3, Hardware packed into the box.
- Delivery Time: 18days or To be negotiated
- Payment Terms: L/C, T/T, Western Union, MoneyGram
- Supply Ability: 50000 Square Meters per Month

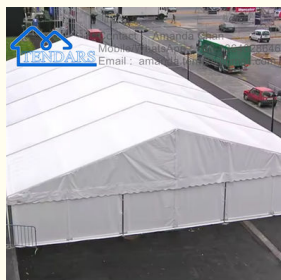


Product Specification

- Product Name: A Shape Storage Tent
- Color: Customized
- Feature: Flame Redartant/UV-resistant/Water Proof
- Frame Material: Aluminum Alloy T6061/T6
- Door: PVC Doors Or Glass Doors
- Application: Hotel/Outdoor Event/ Exhibitions Ect
- Snow Load: 75KG/SQM
- Wind Load: 100KM/H
- Highlight: Warehouse Storage Tent A Shape, Large Outdoor Warehouse Storage Tent, waterproof Warehouse Storage Tent



More Images



for more products please visit us on marquees-tent.com

Product Description

Waterproof Aluminum A Shape Marquee Warehouse Storage Tent Large Outdoor Tent For Sale

Description :

Diameter	Customized Size
Tent Frame	Aluminum Alloy
Covering	Double-side coated polyester pvc fabric
Accessory	PVC Door or Glass Door ,Curtains,decoration lining,Insulaiong,Ventilation window ect
Style	Customized Design
Snow Load	75KG/SQM
Wind Load	100KM/H
Installation	Easy to be assembled and dismantled, movable. No pole inside, tent space can be 100% utilized.
Space	No pole inside the tent,100% available interior space

Size:

Size(Width)	Side Height(m)	Top Height(m)	Frame Size(mm)	Length(m)
3	2.5	3.05	70*36*3	customized
6	2.6	3.69	84*48*3	customized
18	3	5.96	166*88*3	customized
20	3	6.25	122*203*4	customized
25	4	8.06	122*203*4	customized
30	4	8.87	120*254*4	customized
35	4	9.76	120*300*4	customized
40	5	11.5	120*300*5	customized
45	5	12.48	120*350*5	customized
50	5	13.12	120*350*5	customized
60	5	14.75	120*400*5	customized

Here are some installation precautions to keep in mind:

Select a Suitable Location: Choose a flat and level area for the installation of the storage tent. Avoid areas prone to flooding or standing water, as well as locations with obstacles such as rocks, trees, or overhead power lines.

Check Local Regulations: Before installing the tent, check local regulations and obtain any necessary permits or approvals required for temporary structures. Compliance with local building codes and regulations ensures safety and legality.

Prepare the Site: Clear the installation site of any debris, vegetation, or obstacles that may interfere with the assembly process. Ensure that the ground is properly compacted and free of sharp objects that could damage the tent fabric.

Anchor the Frame: Securely anchor the frame of the storage tent to the ground using suitable anchoring methods such as stakes, anchors, or weights. Ensure that the anchoring system is properly installed and tightened to prevent the tent from being lifted or blown away by strong winds.

Assemble the Components: Follow the manufacturer's instructions carefully to assemble the frame components of the tent. Use the provided tools and hardware, and ensure that all connections are properly tightened and secured according to the assembly manual.

Install the Fabric Cover: Once the frame is assembled, carefully install the fabric cover over the frame according to the manufacturer's instructions. Ensure that the cover is stretched evenly and securely fastened to the frame to prevent sagging or flapping in the wind.

Check for Stability: After the tent is fully assembled, check for stability and ensure that all components are properly aligned and secured. Test the tent for stability by gently shaking or applying pressure to different parts of the structure.

Secure Doors and Windows: If the storage tent is equipped with doors, windows, or other openings, ensure that they are properly installed and secured to prevent them from being blown open by wind or weather.

Inspect Regularly: After installation, regularly inspect the storage tent for signs of damage, wear, or loosening of components. Address any issues promptly to ensure the structural integrity and safety of the tent.

Adhere to Load Limits: Follow the manufacturer's recommendations regarding maximum load limits for the storage tent. Avoid overloading the

tent with heavy items or equipment beyond its capacity, as this could compromise its structural integrity.

FAQ :

1. Can you print our logos on tent ?

Yes. Customized logos can be print on the tent fabric according to your requirements.

2. Is that factory price?

Yes. We assure you all prices are factory price.

3. Is your tent strong and stable enough ? How about the wind loading ?

Yes, It is can resist wind up to 100 km/hr, if the wind or snow is very very heavy, please tell us and we will strengthen the tent to keep you safe!



Guangzhou Tendars Tent Co., Limited

☎ 0086 13640286461

✉ amanda@marquees-tent.com

🌐 marquees-tent.com

No.319, 2nd building , 8th zone , Aoyuan city plaza , Zhongcun Street, Guangzhou, Guangdong, China