

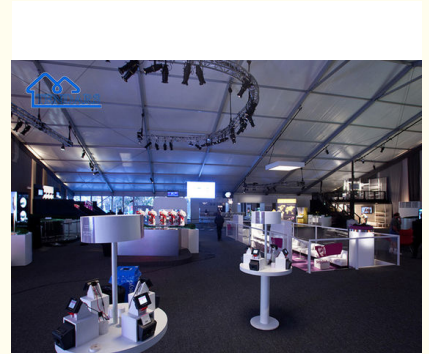


## Latest Design Cheap Price Customized Size Big Aluminum Marquee Party Tents For Sale

### Our Product Introduction

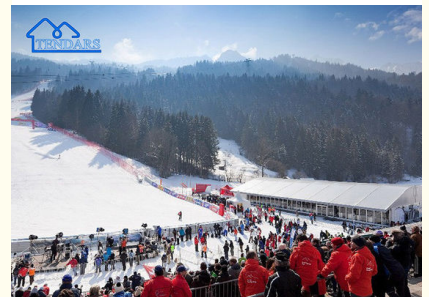
#### Basic Information

- Place of Origin: Guangdong
- Brand Name: Tendars
- Certification: ISO9001, SGS, Coc, CE
- Model Number: Big tent
- Minimum Order Quantity: 25 square meters
- Price: Reconsideration
- Packaging Details: 1, The aluminium frame structure packed into the bubble film 2, the pvc fabric roof cover and sidewalls are packed into the PVC fabric carry bag; 3, Hardware packed into the box.
- Delivery Time: 18days or To be negotiated
- Payment Terms: L/C, T/T, Western Union, MoneyGram
- Supply Ability: 50000 Square Meters per Month

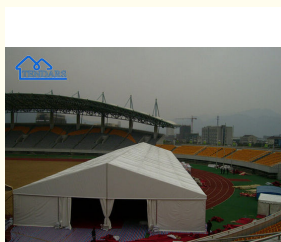


#### Product Specification

- Product Name: Big Aluminum Marquee Party Tents
- Frame Material: Aluminum
- Function: Can Be Assembled To Bigger Or Smaller
- Size: Customized Size
- Use: Outdoor Activities Etc
- Color: White Or Customized Color
- Ground Situation: Grassland, earth Land, asphalt, cement Ground
- Warranty: 5 Years



#### More Images



## Product Description

### Latest Design Cheap Price Customized Size Big Aluminum Marquee Party Tents For Sale

#### Description :

|                        |                                                                                                                                                                                        |
|------------------------|----------------------------------------------------------------------------------------------------------------------------------------------------------------------------------------|
| Clear-span width       | 3m - 50m                                                                                                                                                                               |
| Eave height            | 2.6m /3m/4m/5m/6m or customized                                                                                                                                                        |
| Ridge height           | 4.3 - 8m or customized                                                                                                                                                                 |
| Roof pitch             | 20                                                                                                                                                                                     |
| Longest component      | 3.7-10.6m                                                                                                                                                                              |
| Minimum tent length    | Can be customized                                                                                                                                                                      |
| Roof fixing            | Not limited                                                                                                                                                                            |
| Main profile           | 84x48x3mm/ 122x68x3mm/ 166x88x3mm/ 203x112x4mm/ 204x112x4.5mm/ 256x120x5mm/ 300x125x5mm/ 350x126x6mm/ customized                                                                       |
| Max.allowed wind speed | 100km/hour ,0.5kn/m <sup>3</sup><br>or can be customized                                                                                                                               |
| Eave/Ridge connection  | Hot-dip Galvanized steel insert                                                                                                                                                        |
| Materials              | (1) Frame structure: Hard pressed extruded aluminium 6061 /T6(15HW) which can last 15 to 25 years.                                                                                     |
|                        | (2) Fabric cover: High quality double PVC-coated polyester textile, 100% waterproof, flame retardant to DIN4102 B1, M2, CFM, UV resistant, tear resistant, self-cleaning ability, etc. |
|                        | (3) Connector: Strong hot-DIP galvanized steel                                                                                                                                         |

#### Features:

- 1) High security .
- 2) Heavy-duty and stable structure .
- 3) Elegant and magnificent appearance .
- 4) ISO9001, SGS,Coc, CE certificated .
- 5) No interior poles structure design ,to give 100% use of interior space .
- 6) Easy to assemble and demount .Convenient to transport and storage .
- 7) Wide range of applications; Widely used for outdoor party ,wedding ,celebration ,festival ,fashion show exhibition ,fair ,trade show ,business promotion ,product show ,car showrooms ,conference ,ceremony ,garden centres ,swimming pool cover ,cafe room ,temporary warehouse or workshop ,etc .

#### Size:

| A-Frame Tent Type |           |              |             |              |                |
|-------------------|-----------|--------------|-------------|--------------|----------------|
| Width             | Length    | Bay distance | Side height | Ridge height | Max. wind load |
| 6m                | Unlimited | 3m           | 2.60m       | 3.60m        | 80km/h         |
| 8m                | Unlimited | 3m           | 2.60m       | 3.90m        | 80km/h         |
| 10m               | Unlimited | 3m           | 2.60m       | 4.20m        | 80km/h         |
| 12m               | Unlimited | 5m           | 4.00m       | 6.00m        | 100km/h        |
| 15m               | Unlimited | 5m           | 4.00m       | 6.40m        | 100km/h        |
| 18m               | Unlimited | 5m           | 4.00m       | 6.90m        | 100km/h        |
| 20m               | Unlimited | 5m           | 4.00m       | 7.20m        | 100km/h        |
| 25m               | Unlimited | 5m           | 4.00m       | 8.00m        | 100km/h        |
| 30m               | Unlimited | 5m           | 5.00m       | 9.90m        | 100km/h        |
| 40m               | Unlimited | 5m           | 5.00m       | 11.50m       | 100km/h        |
| 50m               | Unlimited | 5m           | 5.00m       | 13.10m       | 100km/h        |

#### FQA:

##### 1)Q:Are you a factory or trading company?

A:We are a professional tent factory.So we can offer you a competitive price and a fast delivery time,can also control the quality well and supply constantly to insure the quantity.

##### 2)Q:What is the life span of your tents?

A:Life span of the aluminium is 15-20 years,PVC fabric is 5-6 years. Good discount will be given you to get a new fabric from us after 5-6 years.

**3)Q:How to assemble your tents?**

A:We will provide the manual and video for you to study.If you need,we can send a technician to help you in your country.

**4)Q:How to choose the size of tent?**

A:The size depends on how many people you want to stand,sit or have dinner in this tent.And the size also depends on the land space you will put up this tent.Normally,we advise 1-1.5sq.m/person.



**Guangzhou Tendars Tent Co., Limited**



0086 13640286461



amanda@marquees-tent.com



marquees-tent.com

No.319, 2nd building , 8th zone , Aoyuan city plaza , Zhongcun Street, Guangzhou, Guangdong, China