

Fashion Event Marquee Tent 3000mm Large Easy Up Outdoor White Reception Tent Marquee Tent Hire Prices

Our Product Introduction

for more products please visit us on marquees-tent.com

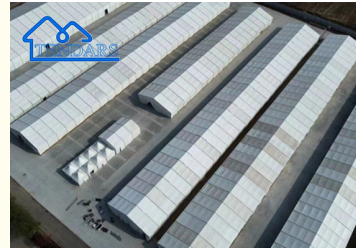
Basic Information

- Place of Origin: Guangdong
- Brand Name: Tendars
- Certification: ISO9001, SGS Coc, CE
- Model Number: Big tent
- Minimum Order Quantity: 25 square meters
- Price: Reconsideration
- Packaging Details: 1, The aluminium frame structure packed into the bubble film 2, the pvc fabric roof cover and sidewalls are packed into the PVC fabric carry bag; 3, Hardware packed into the box.
- Delivery Time: 18days or To be negotiated
- Payment Terms: L/C, T/T, Western Union, MoneyGram
- Supply Ability: 50000 Square Meters per Month

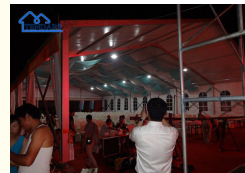


Product Specification

- Product Name: Reception Tent Design
- Aluminum Profile: Hard Pressed Extruded Aluminum Alloy
- Side Wall: Soft PVC Walls, Sandwich Panel, Glass Wall
- Tent Roof Fabric: 850g/sqm Heavy Duty White / Clear PVC Fabric
- Color: White, Gray, Transparent Or Customized
- Lifespan Of Frame: 15 To 20 Years If Well Maintained
- Lifespan Of Cover: 5 To 10 Years If Well Maintained
- Outside Tent Waterproof Index: >3000 Mm
- Highlight: 3000mm Event Marquee Tent, Outdoor White Event Marquee Tent



More Images



Product Description

Fashion Event Marquee Tent 3000mm Large Easy Up Outdoor White Reception Tent Marquee Tent Hire Prices

Product Specification:

Our Product

| | |
|------------|---|
| Frame | Material: Hard pressed anodized aluminum alloy 6061/T6 Aluminum Profiles Available: 100x48mm / 122x68mm / 150x110mm / 166x88mm / 204x114mm / 250x110mm 120x48mm / 150x120mm / 200x120mm /250x120mm/ 300x120mm /420x120mm |
| Roof Cover | 850g/sqm block-out Double PVC coated Fabric, Fire retardant, Water Proof |
| Side Walls | 850g/sqm block-out, 650g/sqm translucent PVC coated fabric, Fire retardant, Water proof |
| Connector | Hot Dip Gavanized Steel connector, Aluminum roof connection |

Tent Dimensions

| Mode | Span Width(m) | Bay Distance(m) | Side Height(m) | Ridge Height(m) | Roof Pitch | Wind Load (km/h) | Snow Load (Kn/m ²) | Popular Size |
|------|---------------|-----------------|----------------|-----------------|------------|------------------|--------------------------------|--------------------|
| S6 | 6m | 3m | 2.5m | 3.7m | 22° | 80km/h | 0.3kn/m ² | 6m×12m |
| S9 | 9m | 3m | 2.5m | 4.3m | 22° | | | 9m×18m |
| S10 | 10m | 5m | 2.5m | 4.25m | 22° | | | 10m×20m |
| M12 | 12m | 5m | 2.6m | 4.6m | 22° | | | 12m×30m |
| M15 | 15m | 5m | 3m | 5.35m | 18° | 100km/h | | 15m×25m 15m×40m |
| L20 | 20m | 5m | 4m | 7.2m | 18° | 120km/h | | 20m×50m |
| L25 | 25m | 5m | 4m | 7.95m | 22° | | | 25m×60m |
| L30 | 30m | 5m | 4m | 8.7m | 22° | | | 30m×80m |
| L40 | 40m | 5m | 4m/5.4m | 10.6m | 22° | | | 40m×100m |
| L50 | 50m | 5m | 4m/5.4m | 12.2m | 22° | | | 50m×100m |
| L60 | 60m | 5m | 4m/5.4m | 14m | 22° | | 60m×100m | |

Background and significance :

There are no extra beams and columns in the tent room, and the space utilization rate is 100%. Through your careful planning, the space is used more imaginably

The canopy enhances the possibilities of outdoor activities and elevates the whole new concept of activities.

The application range of the tent is broad, so the market prospect is promising. Specific applications are: 1 Aviation architecture: is a kind of aviation and aerospace

Building fast and economical solutions. It provides sufficient headroom and wide span for the interior, and no internal midcolumn interferes with the aircraft

The entry and exit and heavy machinery travel, providing the maximum available space for its movement. Hangar, air cargo warehouse, etc. 2 Port Marine construction

Building: Economical especially suitable for port and sea repair facilities, large vessel storage, dock view bridge weather shed, winter yacht storage,

Repair shed, paint booth, dock maintenance and other building functional requirements a good solution. Provides high sidewalls for large and small docks,

The unique design of high headroom and large span, and no internal columns interfere with the entry and exit of the ship and the operation of the machinery. Application: Port warehouse,

Small/large dock, pier trestle weather shed, ship deck roof, container mobile house. 3 Sports buildings: stadiums.

4 Bulk storage buildings: Canopies can be used to store a variety of items, from animal and plant waste to minerals. In addition to reducing costs and

In addition to the advantages of increasing the installation speed, the building with a large amount of plastic greenhouse storage has enough flexibility to reduce the structural impact on the foundation

The sensitivity of uniform settlement and maintenance costs are much lower than those of traditional mass storage buildings. 5 Industrial buildings: Industrial buildings refer to

Buildings and structures in which people engage in specific production activities, including industrial plants: can be divided into general industrial plants and special industrial plants,

According to industrial categories, it includes: chemical plant, pharmaceutical plant, textile plant, metallurgical plant, etc.; Structures: water tower, chimney, factory

Trestle, buy and hold in the area. 6 Commercial buildings: The canopy housing surface is made of building membrane material, which can make full use of natural light during the day, not only for business

It saves economic costs and gives customers a sense of being in nature. This kind of building is especially conducive to supermarkets and vegetables in the development zone

Market and entertainment restaurant applications. 7 Military tents: The application of tents in the military is usually for the equipment and people of military bases

Personnel, vehicles, combat aircraft and other equipment provide temporary storage, rest, accommodation and activities. The unit and standard of the tent structure

Standard containers can be used to quickly transport to all parts of the world by plane or ship, to achieve the agility and time needs of military bases

Yes.

Now it is often used for exhibition, sports events with the tent, temporary storage with the tent, outdoor wedding with the tent, activities and celebrations with the tent

Room, outdoor leisure tent, other (reception information office, VIP lounge, seminar venue, press center, dining area, meeting

Hall, Opening ceremony, pick-up station, brand promotion, Beer Festival, fashion show, banquet, Garden party, cultural activities, touring exhibition,

Staff restaurant, kiosk, golf course).

FAQ :

Q1: Can I obtain samples before mass production?

A: After the price confirmation, you can require samples to check the quality. Sample charged and we sincere hoping for the business cooperation with you in near future.

Q2: How long is your Leadtime?

A: After deposit in, we will make subsequent arrangements to the factory. That production times varies from different tent products, ordinarily it will take 15-25 days to accomplish the production mission.

Q3: Can you accept the tailor-made tent order?

A: Welcome any inquiry to the tailor-made tent product, our Alibaba coordinators will sort out your question and let the professional engineers to answer you back. Drawings, structures, and all the relevant dealings.

Q4: How to contact if there are problems in the tent setup process?

A: Please send us emails, your inquiries will be handled in time, and please choose the methods which suits you most, say WhatsApp, Gmail, Skype, Zoom, and so forth. Real time communications will directly work.



Guangzhou Tendars Tent Co., Limited

☎ 0086 13640286461

✉ amanda@marquees-tent.com

🌐 marquees-tent.com

No.319, 2nd building , 8th zone , Aoyuan city plaza , Zhongcun Street, Guangzhou, Guangdong, China