



Reinforced Steel 10x10m Sports Hall Tent Fire-Retardant Cover Wind-Resistant for Indoor Stadium Series 287

Our Product Introduction

Basic Information

- Place of Origin: Guangdong
- Brand Name: Tendars
- Certification: ISO9001, SGS Coc, CE
- Model Number: Big tent
- Minimum Order Quantity: 25 square meters
- Price: Reconsideration
- Packaging Details: 1, The aluminium frame structure packed into the bubble film 2, the pvc fabric roof cover and sidewalls are packed into the PVC fabric carry bag; 3, Hardware packed into the box.
- Delivery Time: 18days or To be negotiated
- Payment Terms: L/C, T/T, Western Union, MoneyGram
- Supply Ability: 50000 Square Meters per Month

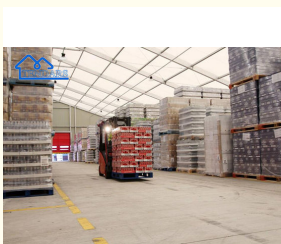


Product Specification

- Product Name: Winning Outdoor Sports Tent
- Frame & Material: Aluminum Alloy 6061/T6, anti-rust
- Max Wind Resistance: 100KM/H
- Slide Wall Select: PVC Fabric/ Glass Wall / Sandwich Wall, 850g/sqm, 750g/sqm, 650g/sqm
- Roof Cover: 850g/m2 Double PVC Fabric With Black-out, fireproof
- Length: 20 Meter Or Customized
- Color: White, Black, Clear, Gray, Blue, Yellow, Red And Customized
- Ground Situation: Grassland, earth Land, asphalt Ground, cement Ground
- Highlight: **Reinforced Steel Sports Hall Tent, Fire-Retardant Sports Hall Tent, Wind-Resistant Indoor Stadium Tent**



More Images



for more products please visit us on marquees-tent.com

Product Description

Waterproof Aluminum Winning Sports Hall Tent Wind Resistance Cheap Party Tents

Description :

25x50mSize	25x50m
Frame material	Hard pressed extruded aluminum alloy 6061/T6
Main aluminum frame profile	203*112*4.6mm thick
Side height	4 meters or customized
Roof cover	850gsm blackout PVC fabric,100% waterproof,UV,flame retardant
Max. wind resistance	100KM/H

The sport tent in winter :

On a winter morning, the wind is so cold that the temperature drops to minus ten degrees. On this cold day, a large tent became our main character. The tent was built to cope with such extreme weather, but its tarpaulin has been severely tested in this cold season. The canopy is made of a common waterproof fabric designed to withstand the elements, but not the extreme low temperatures.

As the cold intensified, the tarpaulin began to crack, and the crisp fabric became hard and brittle. The insulation performance of the tarpaulin decreased significantly, making the temperature in the tent rapidly lost, unable to meet the needs of internal personnel activities.

In order to solve this problem, we decided to adopt an innovative reinforcement measure - adding thermal insulation cotton sandwich inside the tarpaulin. We select high strength, high density insulation cotton materials such as polyurethane foam and nano aerogel. These materials can still maintain good thermal insulation properties and strength at low temperatures.

During construction, we used advanced stitching technology to securely attach the insulation cotton sandwich to the tarpaulin. This process not only ensures the stability of the sandwich, but also seals the edge of the tarp, further preventing the intrusion of cold air. After a lot of hard work, our reinforcement measures were finally completed. That night, when the temperature again dropped to minus ten degrees, we observed the tent again. Thankfully, the tarpaulin did not crack again, and the thermal insulation performance was significantly improved. The people inside can feel the comfortable temperature while staying active.

This experience made us deeply realize that when facing complex problems, we need to apply innovative thinking and scientific methods to solve them. Strengthening the tarpaulin by adding thermal insulation cotton sandwich not only improves the performance of the tent, but also provides us with a safe and comfortable activity space in extreme weather. This kind of reinforcement measure has high practical value and wide application prospect, it is worth our further popularization and application.

RFQ :

Q: Is your tent strong and stable enough? How about the wind loading and the snow loading?

Our tent wind load is 100km/hour to 120km/hour, and the structure can be reinforce;And the tent snow loading is customized according client's weather condition.

Q:Whether your tent can be convenient to install and remove?

Our tent is very convenient to install and remove, and it could be flexible to use in a variety of occasions.

Q. How can you make sure we will receive the product with high quality?


In the processing flow, we have a series of detection machine to control the quality. Before loading, our QC will inspect each shipment and all raw material is according to foodstuff requirement.



Guangzhou Tendars Tent Co., Limited

 0086 13640286461

 amanda@marquees-tent.com

 marquees-tent.com

No.319, 2nd building , 8th zone , Aoyuan city plaza , Zhongcun Street, Guangzhou, Guangdong, China