

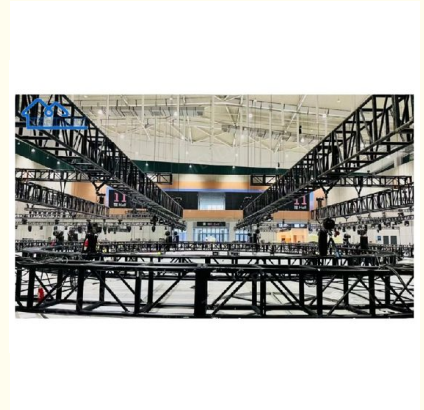


2m Section Bolt Connection Aluminum Stage Truss 6061-T6 Aluminum Square Shape for Concert Stages

Our Product Introduction

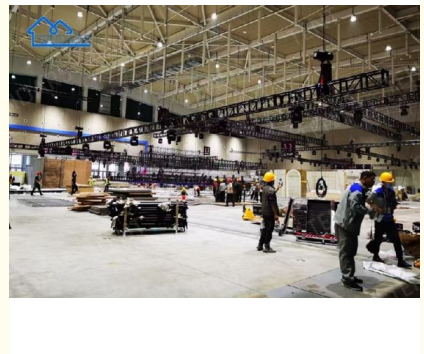
Basic Information

- Place of Origin: Guangdong , China
- Brand Name: Tendars
- Certification: ISO9001, SGS Coc, CE
- Model Number: Big truss
- Minimum Order Quantity: 25 square meters
- Price: Reconsideration
- Packaging Details: 1, The aluminium frame structure packed into the bubble film 2, the pvc fabric roof cover and sidewalls are packed into the PVC fabric carry bag; 3, Hardware packed into the box.
- Delivery Time: 18days or To be negotiated
- Payment Terms: L/C, T/T, Western Union, MoneyGram
- Supply Ability: 50000 Square Meters per Month

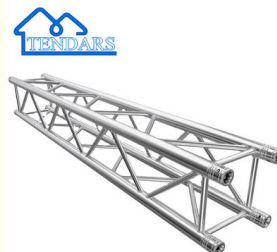
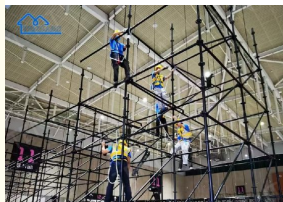


Product Specification

- Product Name: Durable Truss Tent
- Frame Material: Aluminum 6061/T6,6082/T6
- Length Available: 1m,2m,3m,4m
- Shape: Ladder, Triangle, Square, Circle Truss
- Color: Silvery And Black Or Customized
- Type: Spigot And Screw
- Background Truss: To Hang Up Lights And LED, Screen For Truss Frame
- Truss System: To Hold Events(For Light, LED, Speaker, Audio, And So On)
- Highlight: **2m aluminum stage truss, 6061-T6 aluminum square truss, bolt connection concert stage truss**



More Images



for more products please visit us on marquees-tent.com

Product Description

Temporary Permanent Aluminum Stage Truss Durable For Wedding Outdoor Tent Truss Tent For Sale

Product Parameter :

Material	Aluminum 6061/T6,6082/T6
Length available	1m,2m,3m,4m
Shape	Ladder, Triangle, Square, Circle Truss
Color	Silvery and black or customized
Type	Spigot and screw
Characteristics	Durable, Light Weight with high loading capacity. Raw material is hard pressed aluminum alloy, Containing magnesium and silicon as its major alloying elements. It has good mechanical property, exhibits good weldability. It also has good effect of Proof Stress, corrosion resistance, antioxidation.
application	LED truss to hang LED screen / Linear speakers or decorate truss
	Background truss: to hang up lights and LED, screen for truss frame
	Truss system: to hold events(for light, LED, speaker, audio, and so on)
	Ladder truss: hanging speakers

Aluminium Truss Canopy Installation Suggestion:

Size(m)	Main Tube(mm)	Horizontal tube(mm)	Brace Tube(mm)	Loading Capacity(kg)	Span(m)
300*300	50*3	25*2	20*2	440	12
350*350	50*3	25*2	20*2	450	15
400*400	50*3	25*2	25*2	470	16
450*450	50*3	30*2	25*2	500	17
500*500	50*3	50*2	25*2	600	20
520*760	50*3	50*2	25*2	1000	22
600*760	50*3	50*2	25*2	1500	26

Product Features

Truss Framework: The defining feature of a truss tent is its truss-like framework made of metal or aluminum tubes. This framework consists of interconnected triangular elements that form a stable and strong structure.

Versatility: Truss tents come in various sizes and configurations, allowing for customization based on the event's requirements. They can be expanded or connected to create larger covered spaces.

Roof and Walls: Truss tents typically have a fabric roof that is stretched over the truss framework and secured in place. Some models may also feature optional sidewalls that can be added for additional protection from the elements or for creating enclosed spaces.

Open Space: The truss design of these tents creates a spacious and unobstructed interior. There are no center poles or other support structures that can get in the way, making them ideal for events where a clear and open layout is important.

Stability and Strength: The triangular truss structure provides excellent stability and can withstand various weather conditions, including wind and rain. This makes truss tents suitable for both indoor and outdoor use.

Installation: Setting up a truss tent requires more effort and time compared to simpler tent designs, but it can be done relatively quickly with a team of experienced professionals. The truss elements need to be assembled and connected properly to ensure the tent's stability.

Customization: Truss tents offer options for customization, such as adding lighting fixtures, banners, signage, and other accessories to enhance the overall appearance and functionality of the tent.

Durability: The metal or aluminum truss framework contributes to the tent's overall durability and long-lasting performance, making it a suitable investment for repetitive use.

Transport and Storage: Truss tents can be disassembled and packed into compact bundles for transportation and storage. However, due to the more complex design, they may require more storage space compared to traditional dome or cabin-style tents.

Installing a truss tent

requires careful planning and coordination, especially if it's your first time setting up this type of temporary structure. Here's a general guide on

how to install a truss tent:

Preparation----Layout and Marking---Assembling the Truss---Anchoring and Staking---Roof Installation---Sidewall Installation---Finishing Touches

---Accessories and Customization---Inspection and Safety---Dismantling and Storage:

Tent materials :



Frame Structure:

Hard pressed extruded aluminium alloy 6061/T6. European standard, much more harder than normal aluminum alloy. With anodized, the aluminum will not be oxidated and the color will be always new for long time. Lifespan: over 20 years.

The wind load capacity is based on the aluminium hardness.

Hardness achieved 15HW



Tent Fabric Cover:

Double PVC coated polyester, 850g/m², block-out, water-proof, UV resistant, EUR fire retardant DIN4102 B1/M2/B1, snow resistance, tear resistance. Temperature resistance(°C) :-40°C-70 °C. Lifespan: 8 years



Thickness

Premium grade, high gloss white, thickness 2.67mm



Strength

All covers are made of double-coated synthetic fiber with best performance in breaking strength



wind resistant

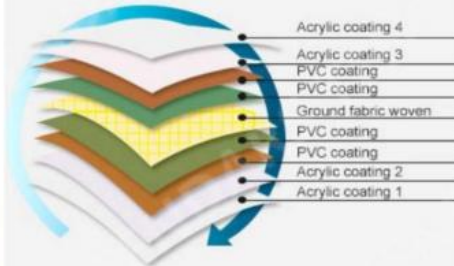


snow resistant

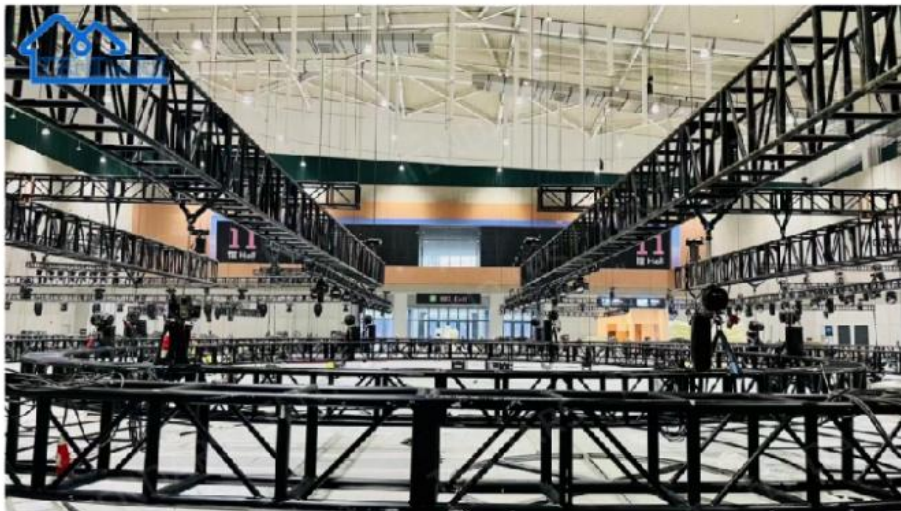


UV resistant

Fabric cover double PVC-coated polyester fabric



Flame retardant to DIN4102 B1, M2, CFM



Guangzhou Tendars Tent Co., Limited

0086 13640286461

amanda@marquees-tent.com

marquees-tent.com

No.319, 2nd building , 8th zone , Aoyuan city plaza , Zhongcun Street, Guangzhou, Guangdong, China